

- ① MAIN 100 AMP POWER FROM ELECTRICAL ROOM TO BOOTH PANEL BOX (10 AMP PER EACH BOOTH)
- ② DEDICATED 20 AMP CASH REGISTER POWER FROM ELECTRICAL ROOM TO BOOTH PANEL SEPARATE GROUND
- ③ DEDICATED 10 AMP CARD READER POWER FROM ELECTRICAL ROOM TO BOOTH PANEL SEPARATE GROUND
- ④ POWER FROM BOOTH PANEL TO GATE, 10 AMP 3/4" CONDUIT
- ⑤ POWER FROM BOOTH PANEL TO TICKET SPITER, 10 AMP 3/4" CONDUIT
- ⑥ POWER FROM BOOTH PANEL TO GATE MINOR AMP, 3/4" CONDUIT
- ⑦ COUNTING SYSTEM FROM OFFICE TO BOOTH FOR LOT FULL SIGN & CONTROLS, 3/4" CONDUIT w/14 # 19s
- ⑧ CASH REGISTER DATA CONTROLS, FROM BOOTH TO BOOTH TO ELECTRICAL ROOM, 3/4" CONDUIT, BELDEN 19919-1PAIR
- ⑨ CARD READER DATA CONTROLS, FROM BOOTH TO BOOTH TO ELECTRICAL ROOM, 3/4" CONDUIT WITH 4 CABLES SIMILAR TO WEST PENN # 242-2 PAIR SHIELDED 20 AWG STRANDED, FROM ELECTRICAL ROOM TO BOOTH ONE 4 CABLES & FROM BOOTH ONE TO BOOTH TWO 2 CABLES.
- ⑩ EMERGENCY RING DOWN TELEPHONE SYSTEM FROM ELECTRICAL ROOM TO BOOTH #2 TELEPHONE PANEL 4 WIRES TO @ 24 AWG x 23 # 18 AWG x 9 # 20 AWG
- ⑪ ANNUNCIATOR ALARM FOR STAIRWELL DOORS 2 WIRES EXIT DOORS TO PANEL IN BOOTH #2
- ⑫ CCTV COAX FROM ELECTRICAL ROOM TO BOOTH TWO TO MONITOR CONSOLE - 5 RESICOAX IN 1 1/4" CONDUIT CONDUIT STUB OUT 3/4" FOR LOOP WIRE (WIRE BY ADS)
- ⑬ LOT FULL SIGN 3/4" CONDUIT (WIRE BY ADS)
- ⑭ CARD READER POWER RUN 3/4" CONDUIT (WIRE BY ADS)
- ⑮ CARD READER DATA RUN 3/4" CONDUIT (WIRE BY ADS)
- ⑯ CARD READER ACTIVATION 3/4" CONDUIT (WIRE BY ADS)
- ⑰ TICKET SPITER ACTIVATION 3/4" CONDUIT (WIRE BY ADS)
- ⑱ TICKET SPITER CONTROL 3/4" CONDUIT (WIRE BY ADS)
- ⑲ GATE CONTROL 3/4" CONDUIT (WIRE BY ADS)
- ⑳ SWITCHABLE LANE CONTROLS, 3/4" CONDUIT (WIRE BY ADS)

100 AMP PANEL

1	20A 20B	RECTICAL LIGHT	A B	208 230	WALL REEF FOR AIR COND.	4
2	20A 20B	IN GATE SPITER	A B	208 230	EMER. PHONE A	5
3	20A 20B	OUT GATE SPITER	A B	208 230	CCTV MONITOR B	6

TYPE 612 BREAKER PANEL FOR BOOTH #2 : PANEL FOR BOOTH #1 SAME EXCEPT BREAKER #6 A9B ARE SPARES.

RECORD DRAWING
DATE: May 2, 1988

APPROVED TO CORRECTED
PROJECT AND PERMIT
NOT APPLICABLE

UNIVERSITY OF MARYLAND AT BALTIMORE
OFFICE OF FACILITIES MANAGEMENT

DATE 5/11/87 BY *CMH*

PEARL ST. GARAGE

SCALE: 3/4" = 1'	APPROVED BY:	DRAWN BY: 7F
DATE: 5-12-86	REVISIONS:	REVISED: 3-5-87
AUTOMATIC DOOR SPECIALIST		DRAWING NUMBER: 42
301-792-4090		

PEARL STREET GARAGE
UNIVERSITY of MARYLAND at BALTIMORE,
MARYLAND 21201
UMAB project no. 85 304 A

Approvals

Director of Physical Plant	Project Architect
Department of General Services Project Administrator	Director of Engineering and Construction

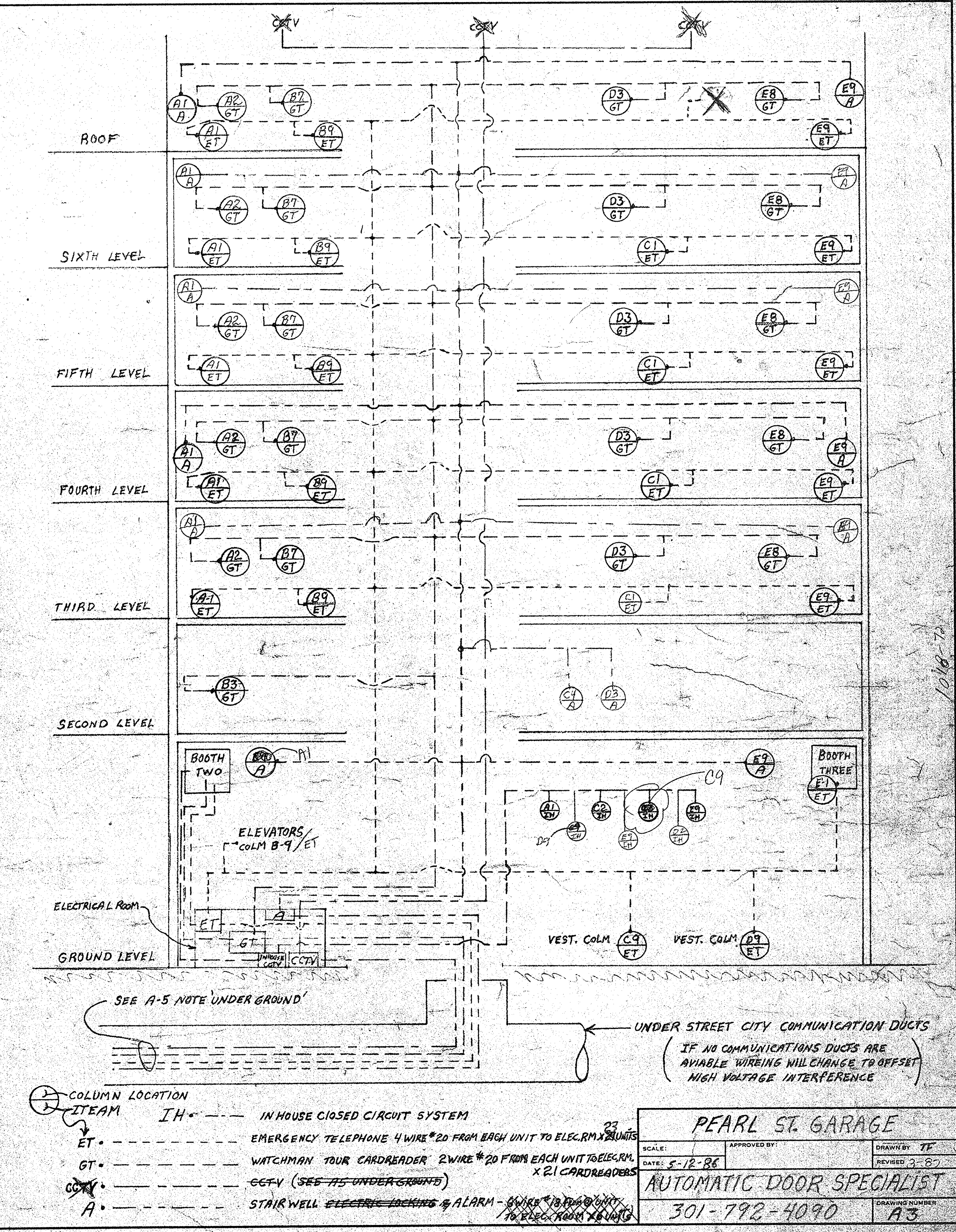
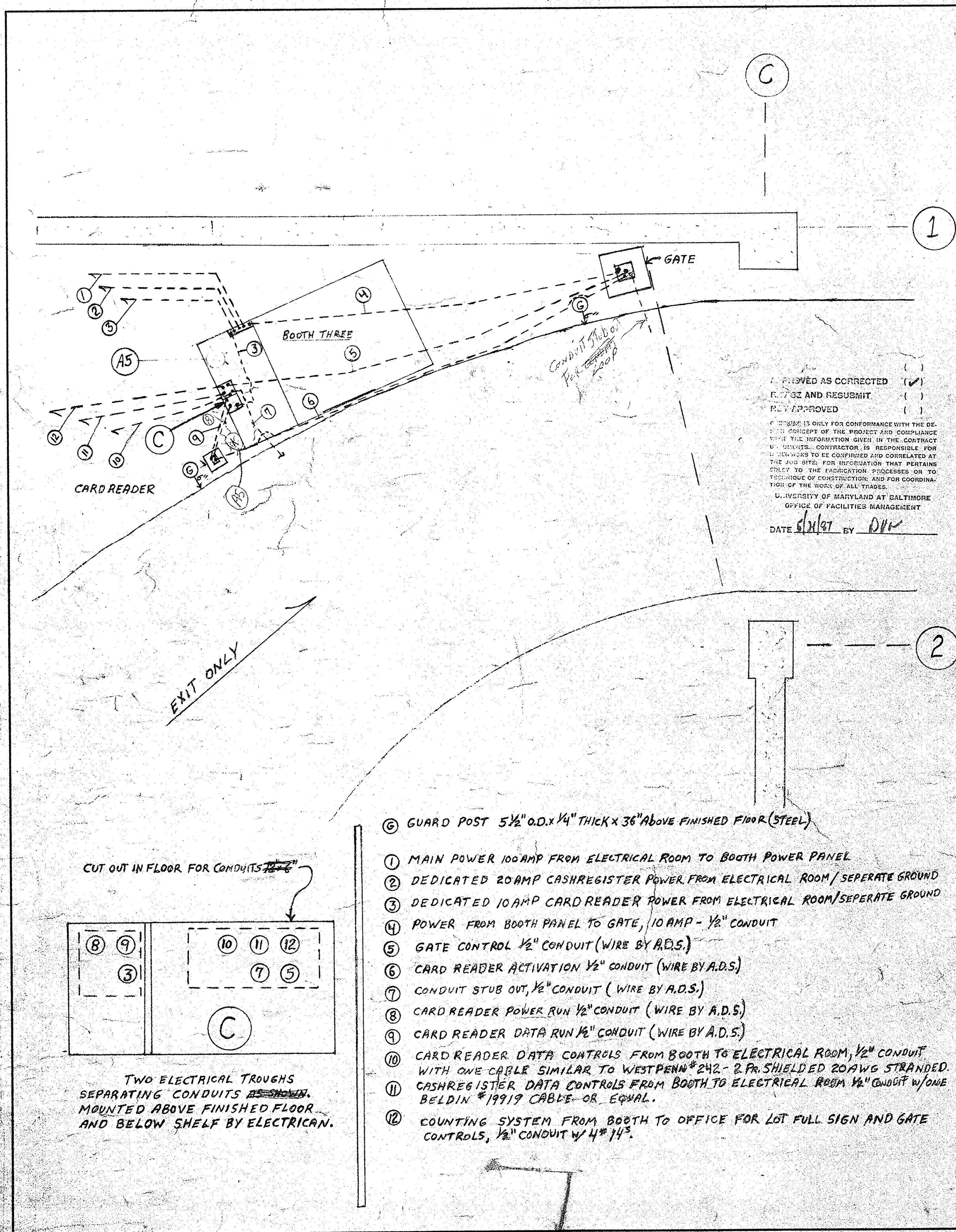
REVISIONS

No.	Date	Item	No.	Date	Item

RTKL
RTKL ASSOCIATES INC.
400 East Pratt Street
Baltimore, Maryland 21202

Contract No. 8527800
Scale: 7/25/86
Date:
Last Rev: 02

BEFORE DRILLING OR SHOOTING INTO PRECAST CONCRETE, COORDINATE LOCATIONS TO AVOID CONTACT WITH PRESTRESSING STRANDS. DAMAGE TO THE STRANDS MAY RESULT IN STRUCTURAL FAILURE.



PEARL STREET GARAGE

UNIVERSITY of MARYLAND at BALTIMORE,
 MARYLAND 21201

UMAB project no. 85 304 A

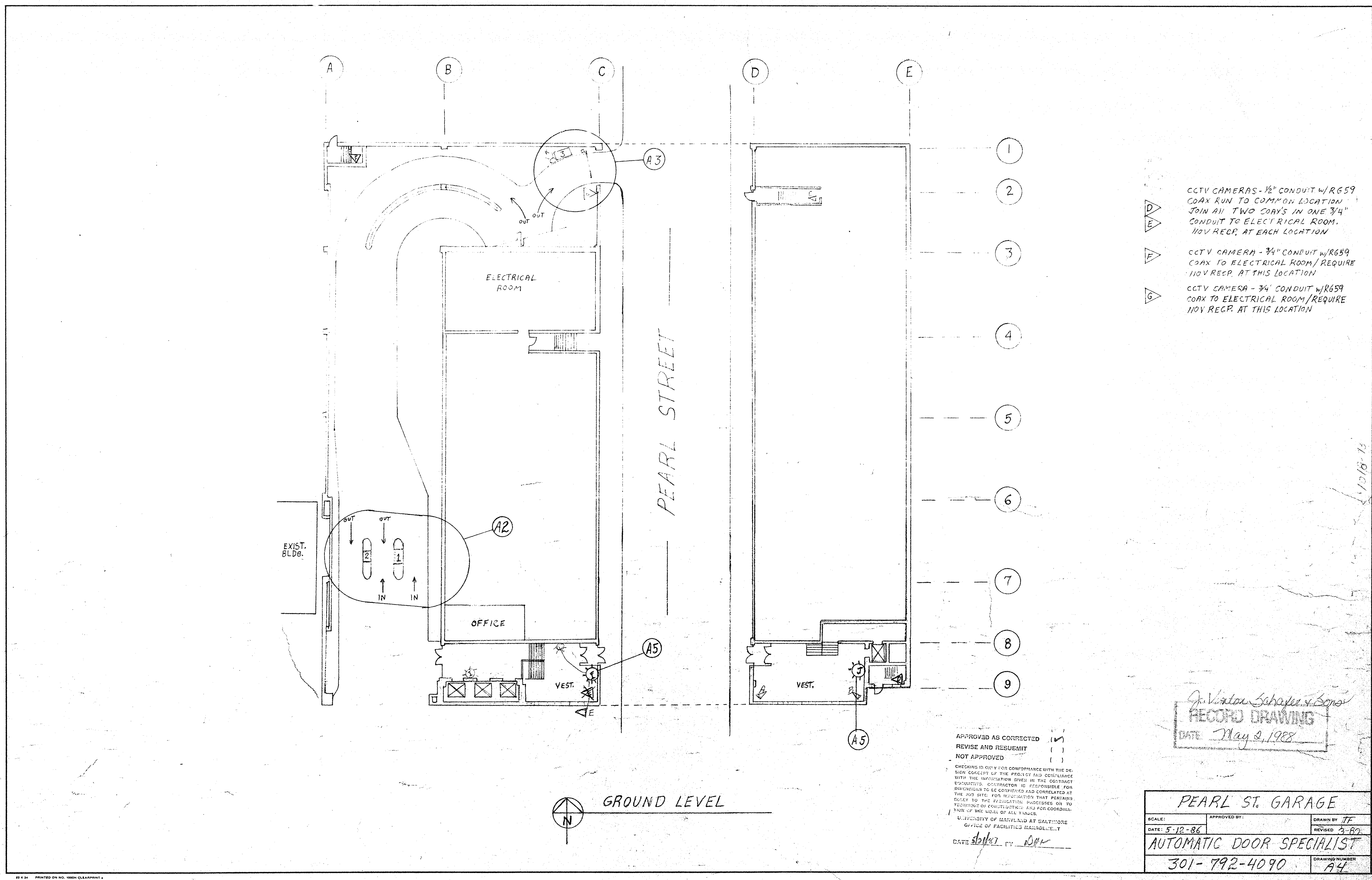
Approvals	
Director of Physical Plant	Project Architect
Department of General Services Project Administrator	Director of Engineering and Construction

No.	Date	Item	No.	Date	Item

REVISIONS

RTKL
 RISK ASSOCIATES INC.
 400 East Pratt Street
 Baltimore Maryland 21202

CONTR. NO. 8527800
 SCALE
 DATE 7/25/86
 LAST REV.



- ▷ CCTV CAMERAS - 1/2" CONDUIT w/R659 COAX RUN TO COMMON LOCATION JOIN AN TWO COAX'S IN ONE 3/4" CONDUIT TO ELECTRICAL ROOM. 110V RECP. AT EACH LOCATION
- ▷ CCTV CAMERA - 3/4" CONDUIT w/R659 COAX TO ELECTRICAL ROOM/ REQUIRE 110V RECP. AT THIS LOCATION
- ▷ CCTV CAMERA - 3/4" CONDUIT w/R659 COAX TO ELECTRICAL ROOM/ REQUIRE 110V RECP. AT THIS LOCATION

J. Vinton Schaffer & Sons
RECORDED DRAWING
 DATE *May 2, 1988*

APPROVED AS CORRECTED (✓)
 REVISE AND RESUBMIT ()
 NOT APPROVED ()

CHECKING IS ONLY FOR CONFORMANCE WITH THE DESIGN CONCEPT OF THE PROJECT AND OCCURRENCE WITH THE INFORMATION GIVEN IN THE CONTRACT DOCUMENTS. CONTRACTOR IS RESPONSIBLE FOR DIMENSIONS TO BE CORRECTED AND CORRELATED AT THE JOB SITE. FOR NOTIFICATIONS THAT PERTAIN TO FOUNDATION OR STRUCTURAL ASKS FOR COORDINATION OF THE USES OF ALL TRADES.

UNIVERSITY OF MARYLAND AT BALTIMORE
 OFFICE OF FACILITIES MANAGEMENT

DATE *5/12/87* BY *JVM*

PEARL ST. GARAGE		
SCALE:	APPROVED BY:	DRAWN BY: <i>TF</i>
DATE: <i>5-12-86</i>		REVISED: <i>3-80</i>
AUTOMATIC DOOR SPECIALIST		DRAWING NUMBER
301-792-4090		<i>A4</i>

PRIOR TO DRILLING OR SHOOTING INTO PRECAST CONCRETE, COORDINATE LOCATIONS TO AVOID CONTACT WITH PRESTRESSING STRANDS. DAMAGE TO THE STRANDS MAY RESULT IN STRUCTURAL FAILURE.

PEARL STREET GARAGE

UNIVERSITY of MARYLAND at BALTIMORE,
 MARYLAND 21201

UMAB project no. 85 304 A

Approvals			
Director of Physical Plant	Project Architect		
Department of General Services Project Administrator	Director of Engineering and Construction		

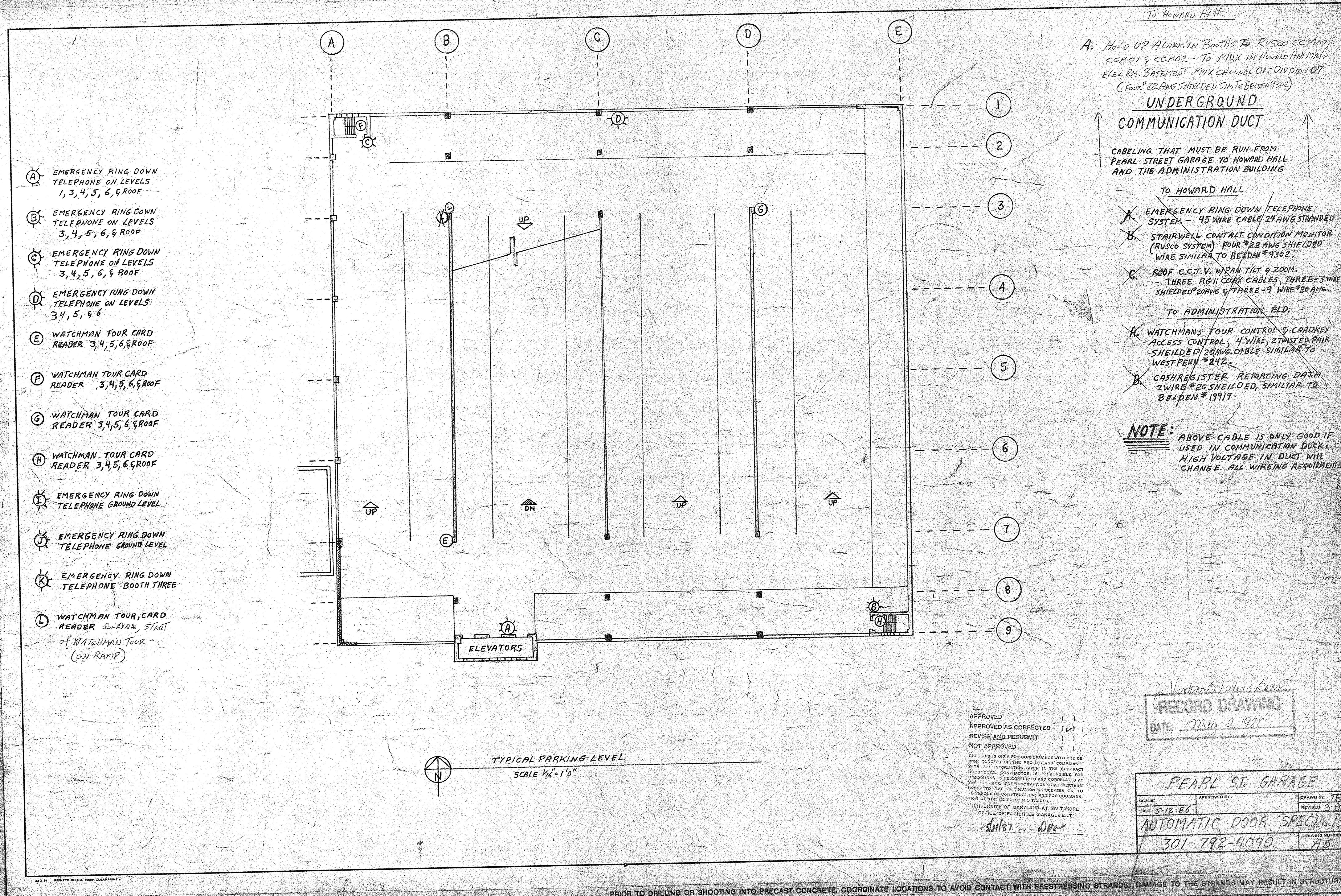
No.	Date	Item	No.	Date	Item
REVISIONS					

Seal	
Drawn	Checked
Approved	

S
 J. VINTON SCHAFER & SONS, INC.
 GENERAL CONTRACTORS
 1150 Pulaski Highway, White Marsh, MD 21228

RTKL
 RTKL ASSOCIATES INC.
 400 East Pratt Street
 Baltimore Maryland 21202

THIS GROUND LEVEL CCTV PLAN	
Contr. No.	<i>6527800</i>
Scale	<i>92</i>
Date	<i>7/25/86</i>
Last Rev.	<i>04</i>



- A EMERGENCY RING DOWN TELEPHONE ON LEVELS 1, 3, 4, 5, 6, & ROOF
- B EMERGENCY RING DOWN TELEPHONE ON LEVELS 3, 4, 5, 6, & ROOF
- C EMERGENCY RING DOWN TELEPHONE ON LEVELS 3, 4, 5, 6, & ROOF
- D EMERGENCY RING DOWN TELEPHONE ON LEVELS 3, 4, 5, & 6
- E WATCHMAN TOUR CARD READER 3, 4, 5, 6, & ROOF
- F WATCHMAN TOUR CARD READER 3, 4, 5, 6, & ROOF
- G WATCHMAN TOUR CARD READER 3, 4, 5, 6, & ROOF
- H WATCHMAN TOUR CARD READER 3, 4, 5, 6, & ROOF
- I EMERGENCY RING DOWN TELEPHONE GROUND LEVEL
- J EMERGENCY RING DOWN TELEPHONE GROUND LEVEL
- K EMERGENCY RING DOWN TELEPHONE BOOTH THREE
- L WATCHMAN TOUR, CARD READER 3, 4, 5, 6, & ROOF START OF WATCHMAN TOUR (ON RAMP)

To HOWARD HALL

A. HOLD UP ALARM IN BOOTHS To RUSCO CCM00, CCM01 & CCM02 - To MUX IN HOWARD HALL MUX, ELEC. RM. BASEMENT MUX CHANNEL 01 - DIVISION 07 (FOUR #22 AWG SHIELDED SIM. TO BELDEN 9302)

UNDERGROUND COMMUNICATION DUCT

CABELING THAT MUST BE RUN FROM PEARL STREET GARAGE TO HOWARD HALL AND THE ADMINISTRATION BUILDING

- To HOWARD HALL
- A. EMERGENCY RING DOWN TELEPHONE SYSTEM - 45 WIRE CABLE 24 AWG STRANDED
 - B. STAIRWELL CONTACT CONDITION MONITOR (RUSCO SYSTEM) FOUR #22 AWG SHIELDED WIRE SIMILAR TO BELDEN #9302.
 - C. ROOF C.C.T.V. WIPAN TILT & ZOOM - THREE RG11 COAX CABLES, THREE-3 WIRE SHIELDED #20 AWG & THREE-9 WIRE #20 AWG
- To ADMINISTRATION BLD.
- A. WATCHMAN'S TOUR CONTROL & CARDKEY ACCESS CONTROL, 4 WIRE, 2 TWISTED PAIR SHIELDED #20 AWG CABLE SIMILAR TO WEST PENN #242.
 - B. CASH REGISTER REPORTING DATA 2 WIRE #20 SHIELDED, SIMILAR TO BELDEN #19919

NOTE: ABOVE-CABLE IS ONLY GOOD IF USED IN COMMUNICATION DUCT. HIGH VOLTAGE IN DUCT WILL CHANGE ALL WIRING REQUIREMENTS

RECORD DRAWING
DATE: May 2, 1988

PEARL ST. GARAGE
AUTOMATIC DOOR SPECIALIST
301-792-4090

APPROVED AS CORRECTED
REVISE AND RESUBMIT
NOT APPROVED

CHANGING IS ONLY FOR CONFORMANCE WITH THE DESIGN QUALITY OF THE PROJECT AND CONFORMANCE WITH THE INFORMATION GIVEN IN THE CONTRACT. THE CONTRACTOR IS RESPONSIBLE FOR VERIFYING THE INFORMATION AND CORRELATING IT TO THE FIELD. THE INFORMATION PERTAINS TO THE FACILITY AND IS NOT TO BE USED FOR OTHER PROJECTS OR FOR COORDINATION OF THE WORK OF ALL TRADES.

UNIVERSITY OF MARYLAND AT BALTIMORE
OFFICE OF FACILITIES MANAGEMENT

DATE: 5/11/87 BY: DM

PEARL STREET GARAGE

UNIVERSITY of MARYLAND at BALTIMORE, MARYLAND 21201

UMAB project no. 85 304 A

Approvals		REVISIONS	
Director of Physical Plant	Project Architect	No. Date	Item
Department of General Services, Project Administrator	Director of Engineering and Construction	No. Date	Item

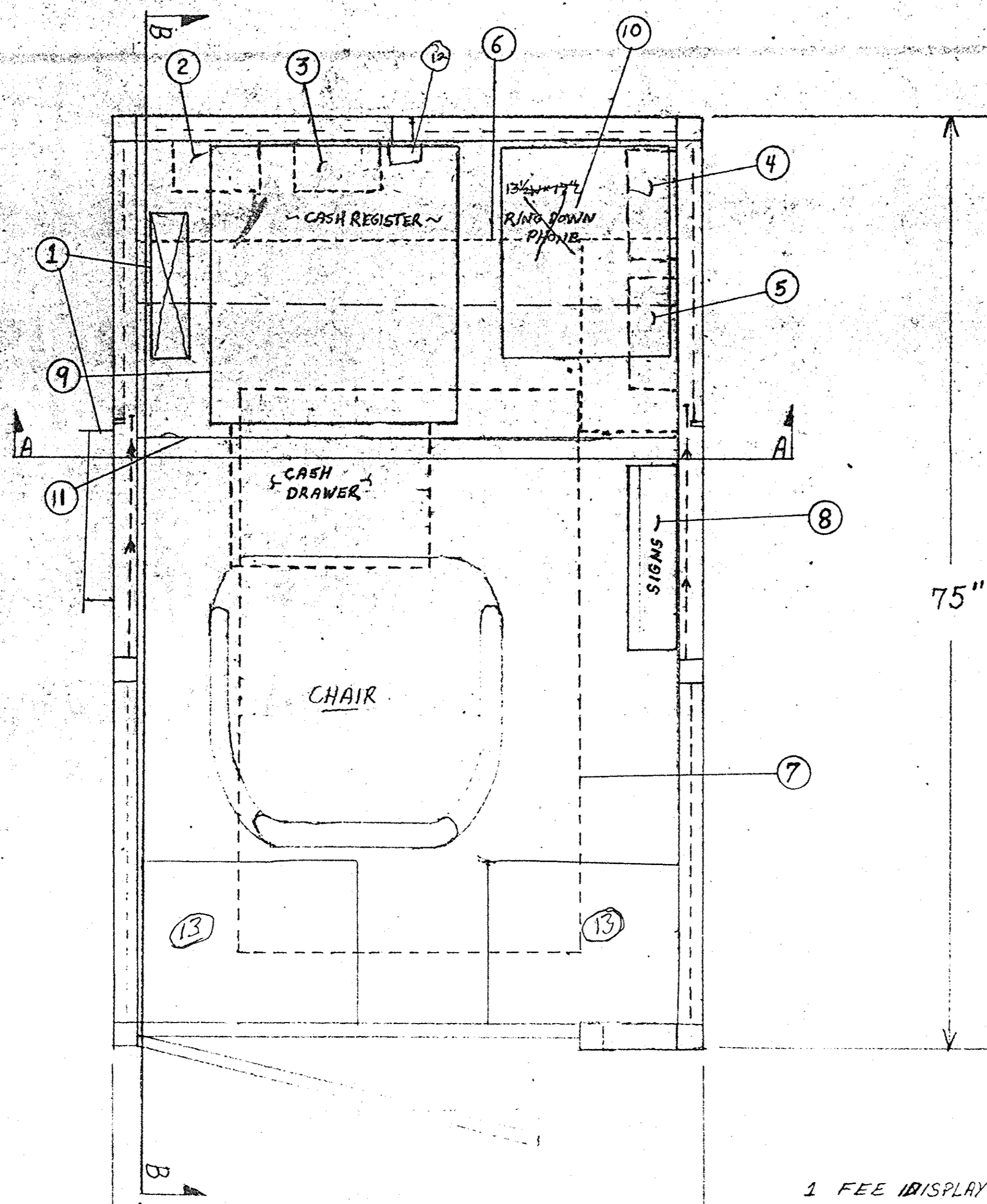
RTKL
RTKL ASSOCIATES INC.
400 East Pratt Street
Baltimore, Maryland 21202

UNIVERSITY OF MARYLAND AT BALTIMORE
OFFICE OF FACILITIES MANAGEMENT

UNDER GROUND COMMUNICATION DUCT PLAN

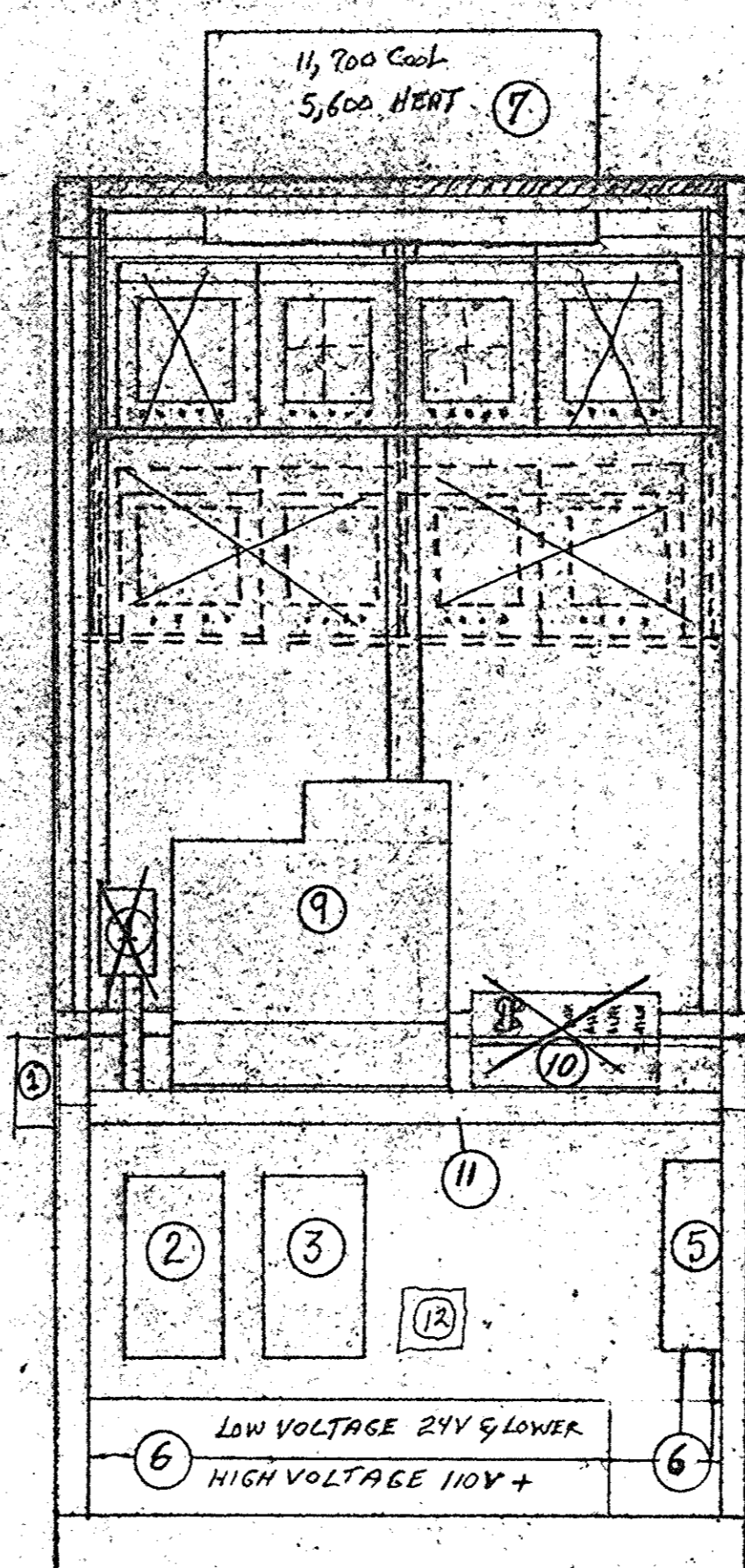
Cont. No. 8527800
Scale: 1/2"=1'-0"
Date: 7/25/87
Last Rev: 05

PRIOR TO DRILLING OR SHOOTING INTO PRECAST CONCRETE, COORDINATE LOCATIONS TO AVOID CONTACT WITH PRESTRESSING STRANDS. DAMAGE TO THE STRANDS MAY RESULT IN STRUCTURAL FAILURE.

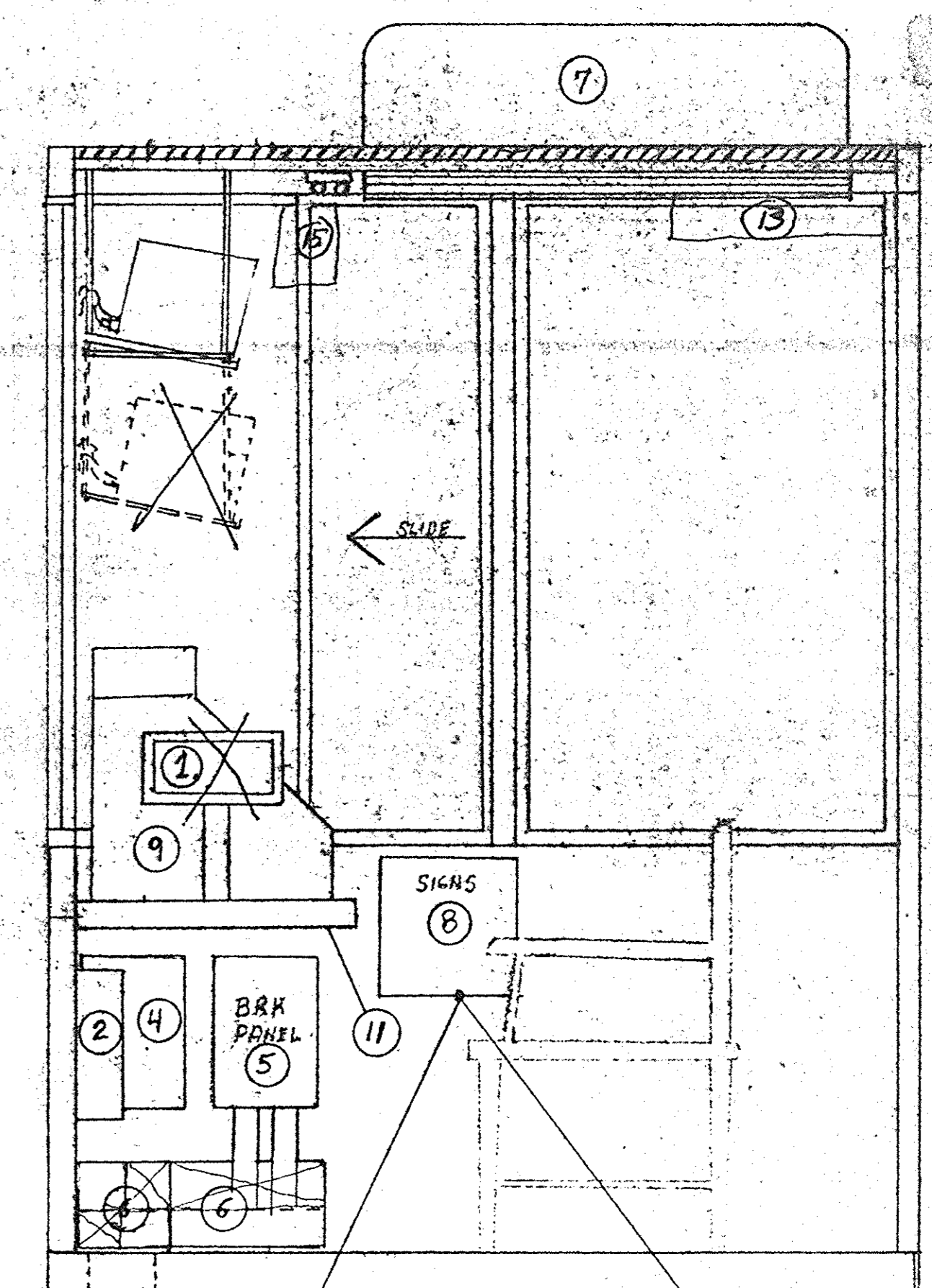


PLAN
1/2" = 1' SCALE

1. FEE DISPLAY
2. CASH CONTROLLER
3. CASH REG. POWER REGULATOR
4. CASH REG. POWER REGULATOR
5. BREAKER PANEL FOR MAIN POWER
6. ELECTRICAL TROUGH 6" x 6" WITH 1/2" SPLIT TROUGH
7. ROOF MOUNTED AIR CONDITIONER
8. SIGN ON/OFF CONTROL BOX
9. CASH REGISTER
10. RING DOWN PHONE
11. BOOTH SHELF BOLTED TO WALLS AND MOUNTED AT 30" HEIGHT

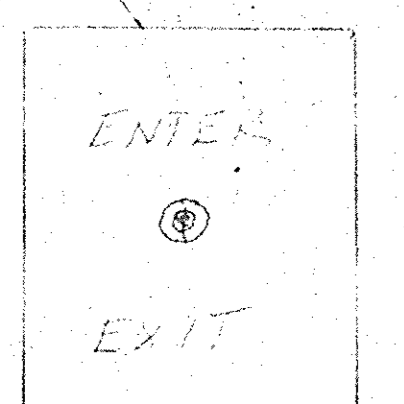
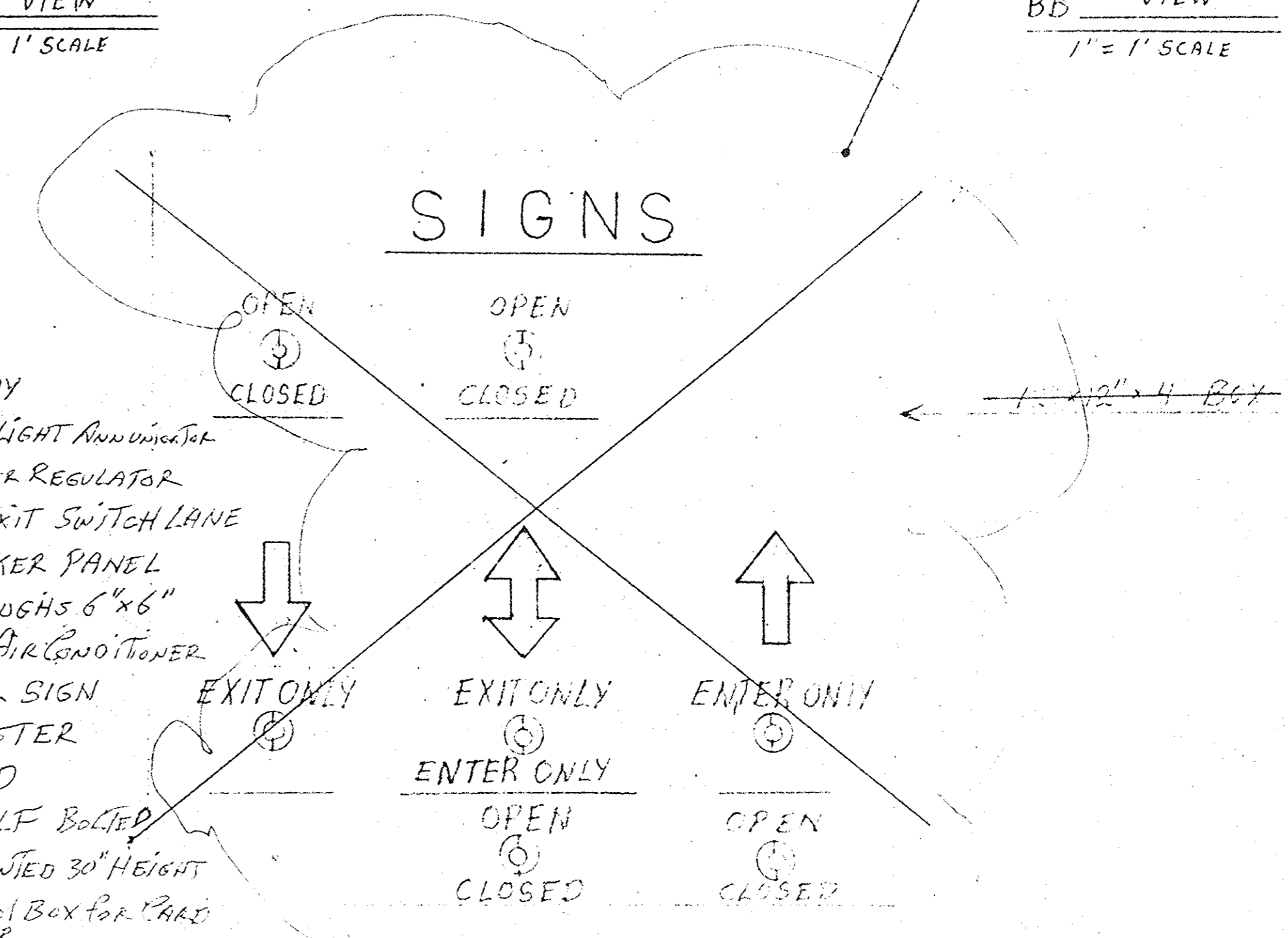


AA VIEW
1" = 1' SCALE



BB VIEW
1" = 1' SCALE

1. FEE DISPLAY
2. JUNCTION BOX FOR LIGHT ANNUNCIATOR
3. CASH REG. POWER REGULATOR
4. ENTRANCE/EXIT SWITCH LANE
5. MAIN BREAKER PANEL
6. TWO ELEC. TROUGHS 6" x 6"
7. ROOF MOUNTED AIR CONDITIONER
8. EXIT/ENTER SIGN
9. CASH REGISTER
10. NOT USED
11. BOOTH SHELF BOLTED TO WALLS & MOUNTED 30" HEIGHT
12. ARMING CONTROL BOX FOR CASH REGISTER
13. TWO CCTV SLITERS OVER DOOR IN CORNERS
14. LIGHT UNDER CCTV SHELVE
15. DOOR OPEN ANNUNCIATOR PANEL



Victor Schaller, Inc.
RECORD DRAWING
DATE: May 2, 1988

AUTOMATIC DOOR SPECIALISTS	
PENSIL ST. GARAGE	
SCALE: 1/2" = 1'	APPROVED BY:
DATE: 5/2/88	REVIEW:
BOOTH EQUIPMENT LAYOUT	
BY: RTHL J. V. SCHIFFER	DRAWING NUMBER: 76

Victor Schaller, Inc.
RECORD DRAWING
DATE: 3/1/88

1018-75